

Features

- Ultra-high conducted attenuation performance
- Compact design, lower cost
- With IEC320 AC socket
- Current rating 20A
- Practical solution for general devices

Marketing Applications

- Conferencing system
- Light sensor system
- Auxiliary power supply
- Endoscopy light source
- Label printer

Numbering System

1 SS1 **2** - U **3** **4** **5** - **6**

1 Rated current

20

2 Electrical schematic

M: excellent performance

3 Components value (refer Filter selection table)

DA: Cx=0.1uF, Cy=2.2nF

DB: Cx=0.1uF, Cy=3.3nF

4 Grounded choke (optional)

G: Lg= 100uH

5 Bleeder resistor (optional)

R: R= 1M ohm; 1/4W min.

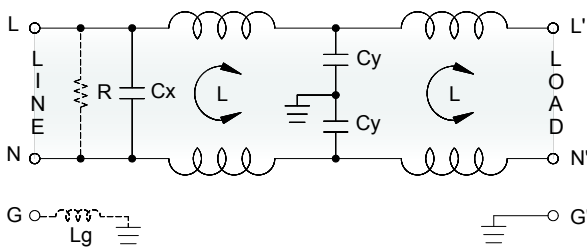
6 Output connections (refer Output terminal)

Q: fast-on tab (6.3mm)

W: with wired (100mm)

Electrical Schematic •

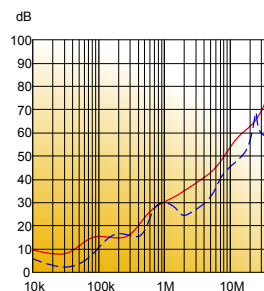
- **M**: excellent performance



Filter Attenuation

Insertion loss (dB) in 50 ohm system CISPR 17 (for reference only)

- 20A



Common mode / Asymmetric (L-G) ————

Differential mode / Symmetric (L-L) - - - - -

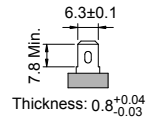
Filter Selection Table ●

Filter Part No.	Rated Current @50°C [A]	Leakage Current @250VAC/50Hz [μA]	Inductance @10KHz,0.25V [mH]	Capacitance		Output terminal	
				Cx [μF]	Cy [nF]		
M: excellent performance							
20SS1M-UDA..	20	450	0.3+0.1	0.1	2.2	-Q	-W
20SS1M-USB..	20	600	0.3+0.1	0.1	3.3	-Q	-W

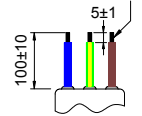
Output Terminal

(unit: mm)

- **Q:** fast-on tab based on UL310 standard



- **W:** with wired stripped and tinned



Mechanical Drawing (unit: mm) ●

- snap-in mount

