

## Features

- Ultra-high attenuation performance
- Multiple stage power line filter
- Current rating 3A~20A
- Various components value
- Ideal for industrial equipment

## Marketing Applications

- POS
- Medical aesthetic equipment
- High power office equipment
- Measuring instruments
- Electronic data processing system

## Numbering System

1 S4 - 2 3 4 - 5

1 Rated current  
03,06,10,15,20

2 Electrical schematic  
3A,3B

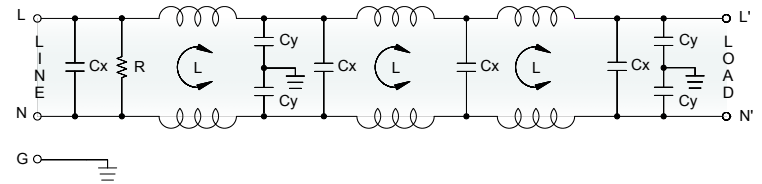
3 Components value  
(refer Filter selection table)

4 Type of case  
(refer Mechanical drawing)  
C4

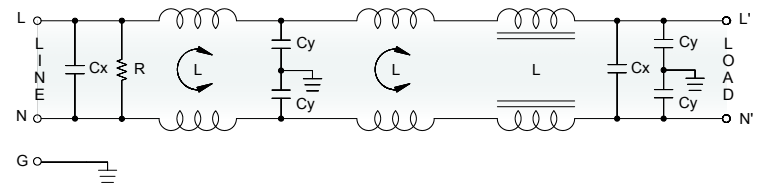
5 Output connections  
(refer Output terminal)  
Q: fast-on tab (6.3mm)  
S: screw (M4)

## Electrical Schematic

• 3A



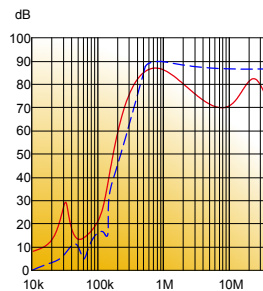
• 3B



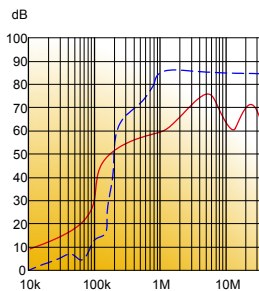
## Filter Attenuation

Insertion loss (dB) in 50 ohm system CISPR 17 (for reference only)

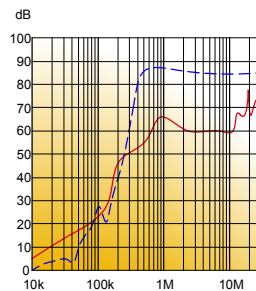
■ 3A



■ 6A~10A



■ 15A~20A



Common mode / Asymmetric (L-G) ————  
Differential mode / Symmetric (L-L) - - - - -

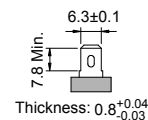
## Filter Selection Table ●

Filter Part No.	Rated Current @50°C [A]	Leakage Current @250VAC/50Hz [μA]	Inductance @10KHz,0.25V Σ[mH] Σ[uH]		Capacitance Cx Cy Σ[μF] Σ[nF]		Resistor R [Ω]	Output terminal	
<b>3A:</b>									
03S4-3A15547215.0474C4	3	2000	45	-	6	18.8	470K	-Q	-S
06S4-3A15547212.0474C4	6	2000	36	-	6	18.8	470K	-Q	-S
10S4-3A15547210.0474C4	10	2000	30	-	6	18.8	470K	-Q	-S
15S4-3A1554726.0474C4	15	2000	18	-	6	18.8	470K	-Q	-S
20S4-3A1554724.0474C4	20	2000	12	-	6	18.8	470K	-Q	-S
<b>3B:</b>									
03S4-3B33547215.0334C4	3	2000	30	300	6.6	18.8	330K	-Q	-S
06S4-3B33547212.0334C4	6	2000	24	200	6.6	18.8	330K	-Q	-S
10S4-3B33547210.0334C4	10	2000	20	100	6.6	18.8	330K	-Q	-S
15S4-3B3354726.0334C4	15	2000	12	60	6.6	18.8	330K	-Q	-S
20S4-3B3354724.0334C4	20	2000	8	30	6.6	18.8	330K	-Q	-S

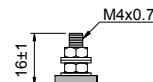
## Output Terminal

(unit: mm)

- **Q:** fast-on tab based on UL310 standard

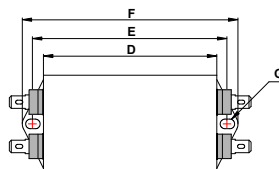
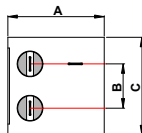


- **S:** screw based on ISO4032 standard



## Mechanical Drawing (unit: mm)

- C4 type



Case	C4
A	69.8
B	25
C	50.6
D	133.5
E	142.5
F	152.5
G	2-Ø5x6.35