

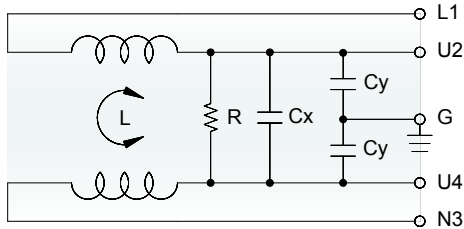
Features

- Good attenuation of differential and common mode noise
- Cylindrical can design
- Current rating 1A~16A
- Easy to install with stud or bracket for assembly
- Various mechanical dimension for different requirements

Marketing Applications

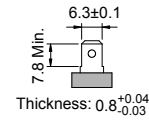
- Washing machine. Dish washer
- Automatic coffee machine
- Blender. Fridge. Oven
- Extractor hood. Vacuum cleaner
- Vending machine

Electrical Schematic



Output Terminal (unit: mm)

- Q: fast-on tab based on UL310 standard



Filter Selection Table

Filter Part No.	Rated Current @50°C [A]	Leakage Current @250VAC/50Hz [μA]	Inductance @10KHz,0.25V [mH]	Capacitance		Resistor R [Ω]
				Cx [μF]	Cy [nF]	
10S7D-.1052732.0334-Q	10	5400	2	1	27	330K
10S7D-.4741030.5684-Q	10	2000	0.5	0.47	10	680K
10S7D-.1052732.0334-Q	10	5400	2	1	27	330K
10S7D-.1544720.5105-Q	10	1000	0.5	0.15	47	1M
16S7D-.4744721.0684-Q	16	1000	1	0.47	4.7	680K
16S7D-.1052731.0334-Q	16	5400	1	1	27	330K
16S7D-.4744721.0684-Q	16	1000	1	0.47	4.7	680K
16S7D-.4741031.0684-Q	16	2000	1	0.47	10	680K

Filter Attenuation

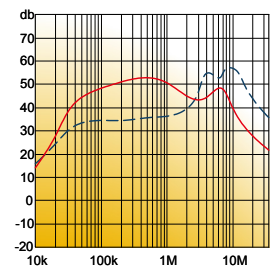
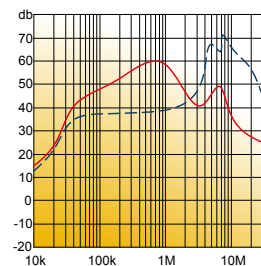
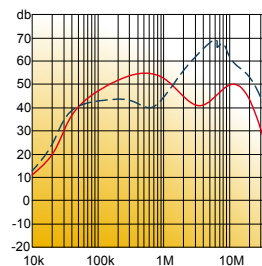
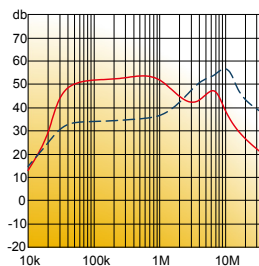
Insertion loss (dB) in 50 ohm system CISPR 17 (for reference only)

■ 10S7D-.1052732.0334-Q

■ 10S7D-.4741030.5684-Q

■ 16S7D-.4744721.0684-Q

■ 16S7D-.1052731.0334-Q



Common mode / Asymmetric (L-G) ————
 Differential mode / Symmetric (L-L) - - - - -

Type of Case •

• With stud

A1 case



A4 case



A14 case



D1 case



D4 case



D14 case



• With bracket

B2 case



X3 case



J9 case

