

Features

- 3 in 1 compact power entry modules with filtered
- IEC950 appliance inlet
- Screw mount
- Current rating 1A~10A
- With IEC950 appliance inlet and fuse holder and switch

Marketing Applications

- Safety tester
- Automated optical inspection (AOI)
- SMPS
- Medical device (not body-coupled)
- Portable electrical and electronic equipment

Numbering System

1 SS6A - **2** **3** **4** **5** **6** - **7** **B** **8**

1 Rated current

01,02,04,06,10

2 Type of module

B1: socket + switch + single fuse holder
B2: socket + switch + double fuse holders

3 Electrical schematic

A: general purpose; **B**: high performance

4 Components value (refer Filter selection table)

H: Cx=0.22uF

5 Grounded choke (optional)

G: Lg= 400uH

6 Bleeder resistor (optional)

R: R= 1M ohm; 1/4W min.

7 Output connections (refer Output terminal)

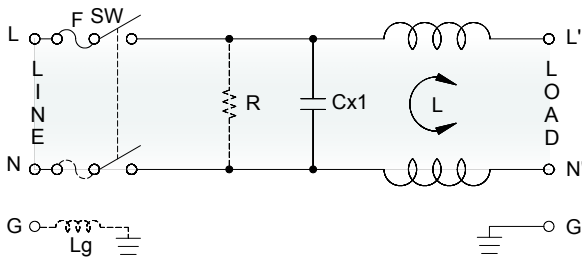
Q: fast-on tab (6.3mm)

8 Type of switch

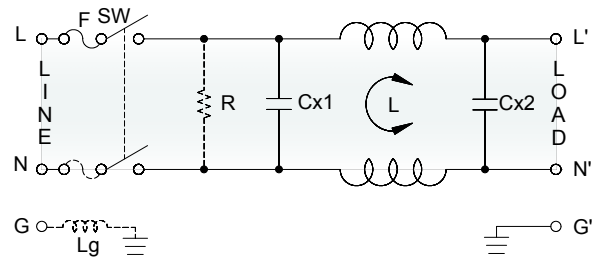
B: switch with black rocker
R: switch with illuminated red rocker
G: switch with illuminated green rocker

Electrical Schematic •

• **A**: general purpose

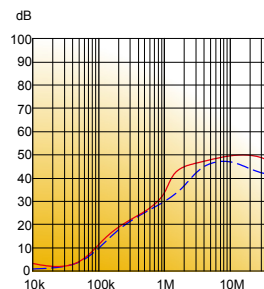


• **B**: high performance

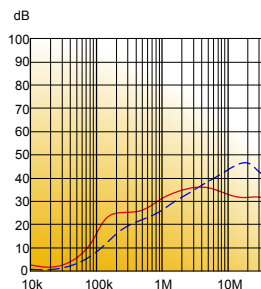


Filter Attenuation Insertion loss (dB) in 50 ohm system CISPR 17 (for reference only)

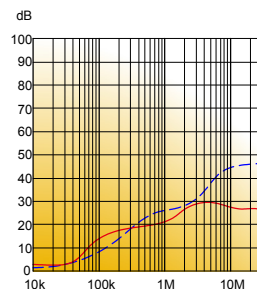
1A~3A



4A~6A



8A~10A



Common mode / Asymmetric (L-G) ————
 Differential mode / Symmetric (L-L) - - - - -

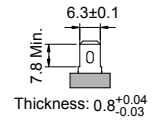
Filter Selection Table ●

| Filter Part No. | Rated Current @50°C [A] | Leakage Current @250VAC/50Hz [μA] | Inductance @10KHz, 0.25V [mH] | Capacitance | | |
|----------------------------|-------------------------------|---|-------------------------------------|-------------|-------------|------------|
| | | | | Cx1 [μF] | Cx2 [μF] | Cy [nF] |
| A: general purpose | | | | | | |
| 01SS6A-.AH..-QB. | 1 | 5 | 7.5 | 0.22 | - | - |
| 02SS6A-.AH..-QB. | 2 | 5 | 5.5 | 0.22 | - | - |
| 04SS6A-.AH..-QB. | 4 | 5 | 2 | 0.22 | - | - |
| 06SS6A-.AH..-QB. | 6 | 5 | 0.8 | 0.22 | - | - |
| 10SS6A-.AH..-QB. | 10 | 5 | 0.4 | 0.22 | - | - |
| B: high performance | | | | | | |
| 01SS6A-.BH..-QB. | 1 | 5 | 7.5 | 0.22 | 0.22 | - |
| 02SS6A-.BH..-QB. | 2 | 5 | 5.5 | 0.22 | 0.22 | - |
| 04SS6A-.BH..-QB. | 4 | 5 | 2 | 0.22 | 0.22 | - |
| 06SS6A-.BH..-QB. | 6 | 5 | 0.8 | 0.22 | 0.22 | - |
| 10SS6A-.BH..-QB. | 10 | 5 | 0.4 | 0.22 | 0.22 | - |

Output Terminal

(unit: mm)

- Q: fast-on tab based on UL310 standard



Mechanical Drawing (unit: mm) ●

- screw mount | horizontal

