

Features

- Standard conducted attenuation performance
- With DPST rocker switch
- Snap-in mount
- Current rating 1A~10A
- With IEC320 AC socket and switch

Marketing Applications

- Controls and communication systems
- Surveillance system
- Medical power supply
- Diagnostic imaging device
- Clinical chemistry analyzer

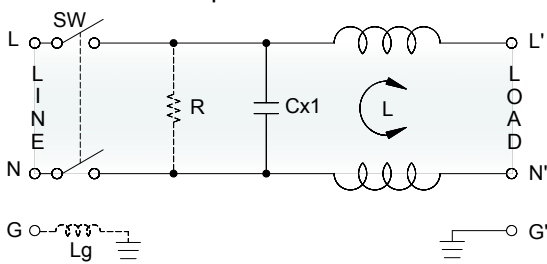
Numbering System

1 SS3 **2** - **3** S P **4** **5** **6** - **7** (**8**)

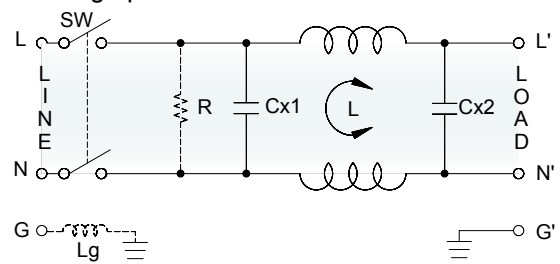
- 1** Rated current
01,02,04,06,10
- 2** Electrical schematic
A: medical compliance
- 3** Additional schematic (optional)
A: high performance
- 4** Components value (refer Filter selection table)
S: Cx=0.1uF
- 5** Grounded choke (optional)
G: Lg= 100uH
- 6** Bleeder resistor (optional)
R: R= 1M ohm; 1/4W min.
- 7** Output connections (refer Output terminal)
Q: fast-on tab (6.3mm)
W: with wired (100mm)
- 8** Type of switch
B: switch with black rocker
R: switch with illuminated red rocker
G: switch with illuminated green rocker

Electrical Schematic •

• A: medical compliance

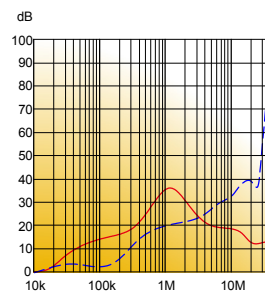


• A: high performance

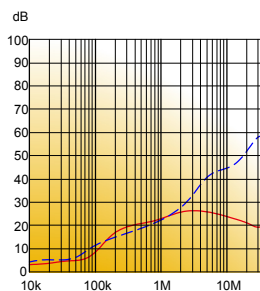


Filter Attenuation Insertion loss (dB) in 50 ohm system CISPR 17 (for reference only)

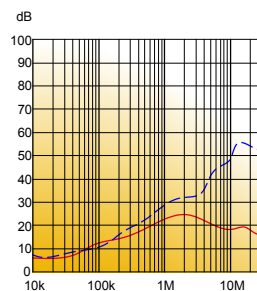
■ 1A~3A



■ 4A~6A



■ 8A~10A



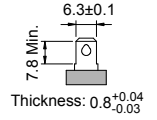
Common mode / Asymmetric (L-G) ———
Differential mode / Symmetric (L-L) - - - -

Filter Selection Table •

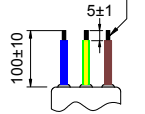
Filter Part No.	Filter PRJ No.	Rated Current @50°C [A]	Leakage Current @250VAC/50Hz [µA]	Inductance @10KHz,0.25V [mH]	Capacitance		
					Cx1 [µF]	Cx2 [µF]	Cy [nF]
A: medical compliance							
01SS3A-SPS...(.)	S013ASPS....D02	1	5	6.5	0.1	-	-
02SS3A-SPS...(.)	S023ASPS....D02	2	5	3.8	0.1	-	-
04SS3A-SPS...(.)	S043ASPS....D02	4	5	1.6	0.1	-	-
06SS3A-SPS...(.)	S063ASPS....D02	6	5	0.8	0.1	-	-
10SS3A-SPS...(.)	S103ASPS....D02	10	5	0.2	0.1	-	-
A: high performance							
01SS3A-ASPS...(.)	S013AASPS....D02	1	5	6.5	0.1	0.1	-
02SS3A-ASPS...(.)	S023AASPS....D02	2	5	3.8	0.1	0.1	-
04SS3A-ASPS...(.)	S043AASPS....D02	4	5	1.6	0.1	0.1	-
06SS3A-ASPS...(.)	S063AASPS....D02	6	5	0.8	0.1	0.1	-
10SS3A-ASPS...(.)	S103AASPS....D02	10	5	0.2	0.1	0.1	-

Output Terminal (unit: mm)

- **Q:** fast-on tab based on UL310 standard

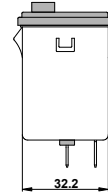
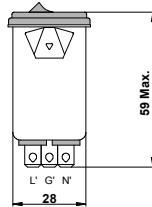
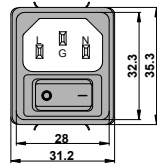


- **W:** with wired stripped and tinned



Mechanical Drawing (unit: mm)

- snap-in mount | slim



Suggested Panel Cutout
(Mounting from front)

