

### Features

- Standard conducted attenuation performance
- Single stage power line filter
- Current rating 1A~30A
- Various output connections
- Light weight metal housing design

### Marketing Applications

- Single-phase power supplies
- Electrocardiograph
- Electrosurgical generator
- Network technology
- Medical device (not body-coupled)

### Numbering System

**1** SS4 **A** - **2** **3** - **4** **5** - **6**

**1** Rated current

01,03,06,10,15,20,30

**2** Electrical schematic

1A,1B

**3** Type of case (refer Mechanical drawing)

**A1:** only for 1~10A

**A2:** only for 1~20A

**A3:** only for 1~30A

**4** Components value (refer Filter selection table)

**B:** Cx=0.1uF

**Blank:** Cx=0.22uF

**5** Bleeder resistor (optional, refer Filter selection table)

R

**6** Output connections (refer Output terminal)

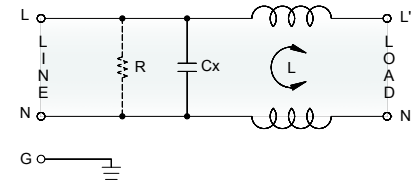
**Q:** fast-on tab (6.3mm)

**S:** screw (M4)

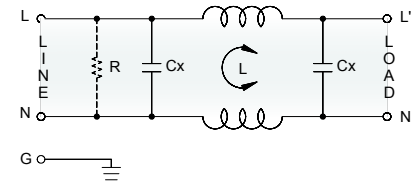
**W:** with wired (100mm)

### Electrical Schematic

• 1A



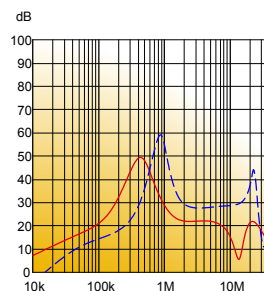
• 1B



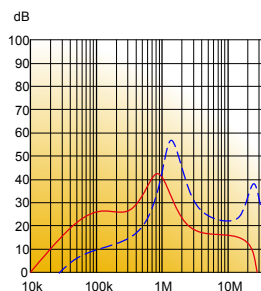
### Filter Attenuation

Insertion loss (dB) in 50 ohm system CISPR 17 (for reference only)

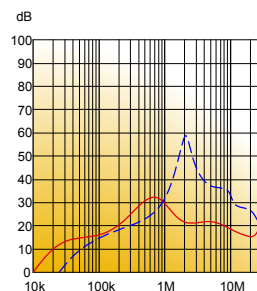
■ 1A~3A



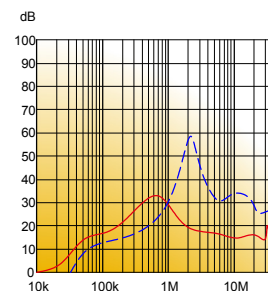
■ 6A~10A



■ 15~20A



■ 30A



Common mode / Asymmetric (L-G) ————  
 Differential mode / Symmetric (L-L) - - - - -

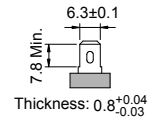
## Filter Selection Table ●

Filter Part No.	Rated Current @50°C [A]	Leakage Current @250VAC/50Hz [μA]	Inductance @10KHz,0.25V [mH]	Capacitance		Resistor R [Ω]	Output terminal		
				Cx [μF]	Cy [nF]				
<b>1A:</b>									
01SS4A-1AA1-B.	1	5	10	0.1	-	1M	-Q	-	-W
03SS4A-1AA1-B.	3	5	1.2	0.1	-	1M	-Q	-	-W
06SS4A-1AA2-B.	6	5	0.8	0.1	-	1M	-Q	-S	-W
10SS4A-1AA2-B.	10	5	1	0.1	-	1M	-Q	-S	-W
15SS4A-1AA2-B.	15	5	0.8	0.1	-	1M	-Q	-S	-W
20SS4A-1AA3-B.	20	5	0.7	0.1	-	1M	-Q	-S	-W
30SS4A-1AA3-B.	30	5	0.3	0.1	-	1M	-Q	-S	-W
<b>1B:</b>									
01SS4A-1BA2-.	1	5	10	0.22	-	2.2M	-Q	-S	-W
03SS4A-1BA2-.	3	5	2	0.22	-	2.2M	-Q	-S	-W
06SS4A-1BA2-.	6	5	0.8	0.22	-	2.2M	-Q	-S	-W
10SS4A-1BA2-.	10	5	1.2	0.22	-	2.2M	-Q	-S	-W
15SS4A-1BA3-.	15	5	0.9	0.22	-	2.2M	-Q	-S	-W
20SS4A-1BA3-.	20	5	0.7	0.22	-	2.2M	-Q	-S	-W
30SS4A-1BA3-.	30	5	0.3	0.22	-	2.2M	-Q	-S	-W

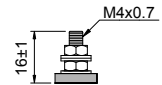
## Output Terminal

(unit: mm)

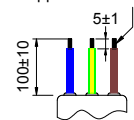
- **Q:** fast-on tab based on UL310 standard



- **S:** screw based on ISO4032 standard

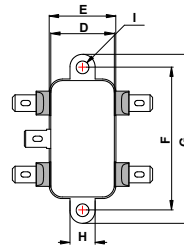
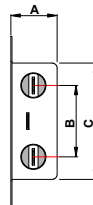


- **W:** with wired stripped and tinned



## Mechanical Drawing (unit: mm) ●

- A type



Case	A1	A2	A3
A	17.5	30	30
B	27	21.2	28.1
C	44	43.5	52
D	24	32.5	46
E	26	35	48
F	54.1	54	61
G	64.5	64	71
H	9.5	10	10
I	2-Ø4.8	2-Ø5.3x6.3	